

# edilportale<sup>®</sup>

## TOUR 2018

Efficienza Energetica, Antisismica,  
Comfort Abitativo, NTC2018, Illuminazione,  
Acustica, BIM, Realtà Virtuale

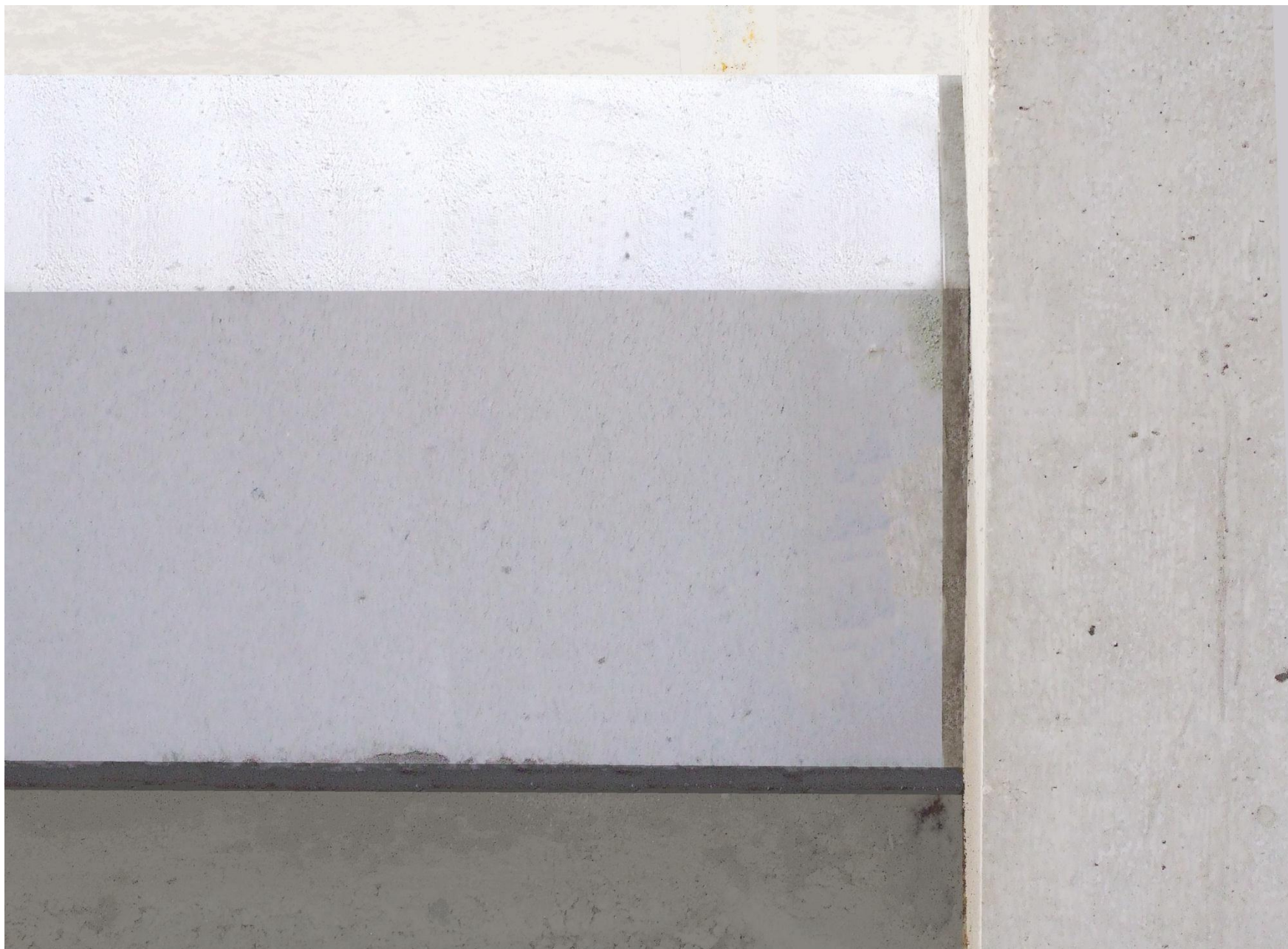
MACERATA, 14 MARZO 2018

mattONE

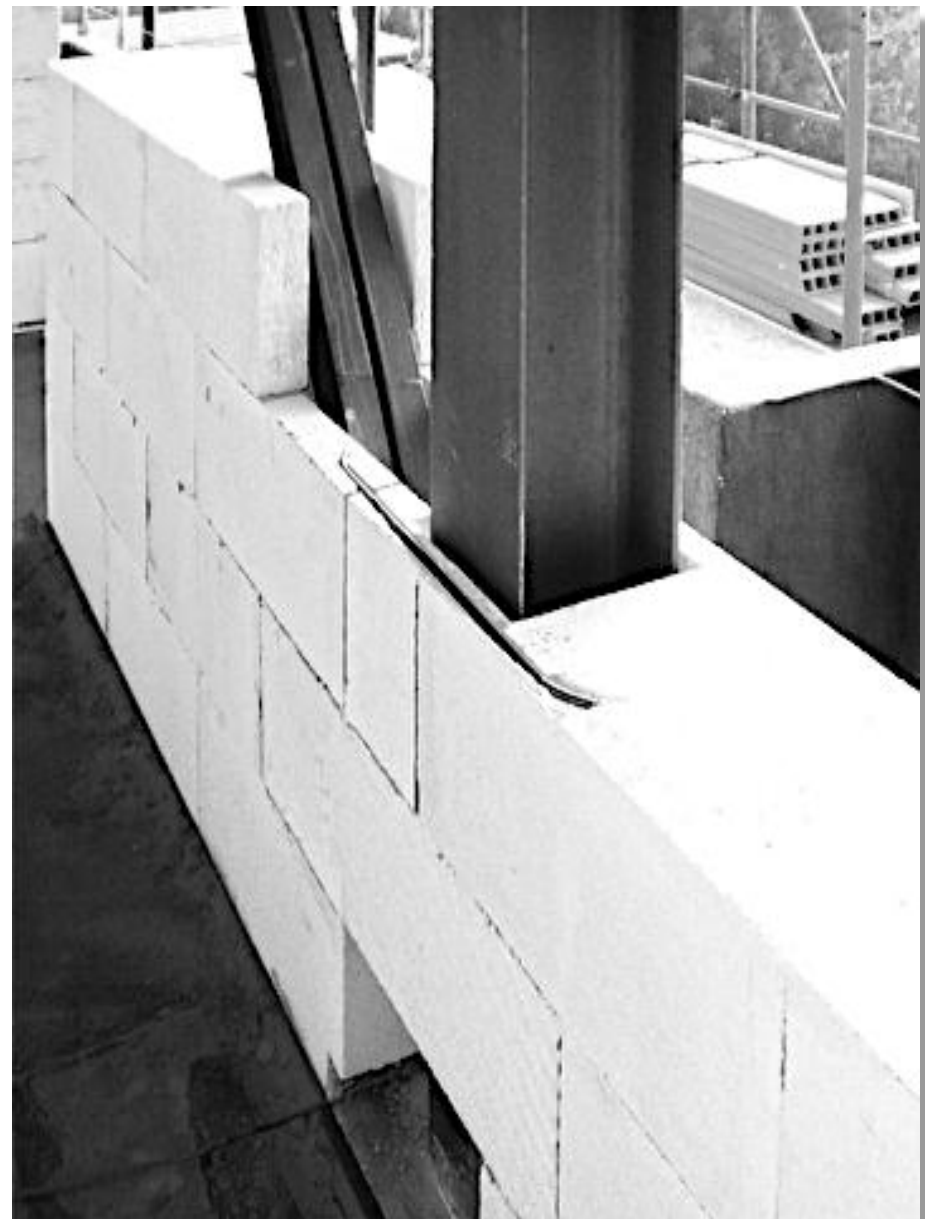
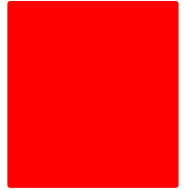
Marco Toro



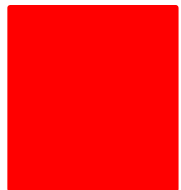












ospedale



Edificio Industriale Aterno Vetro



Palazzina f.lli Carratelli - Onna



Hotel Federico II

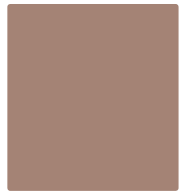










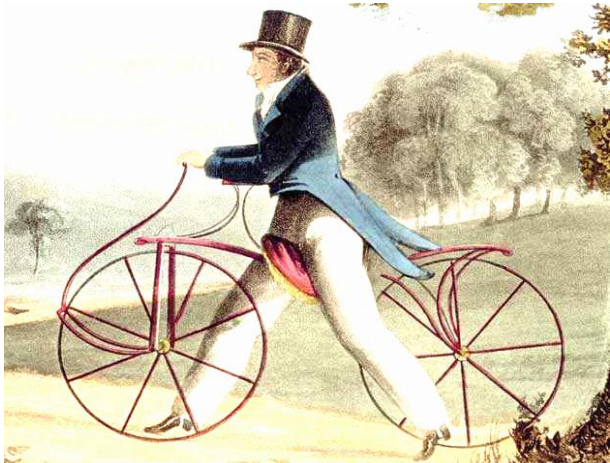
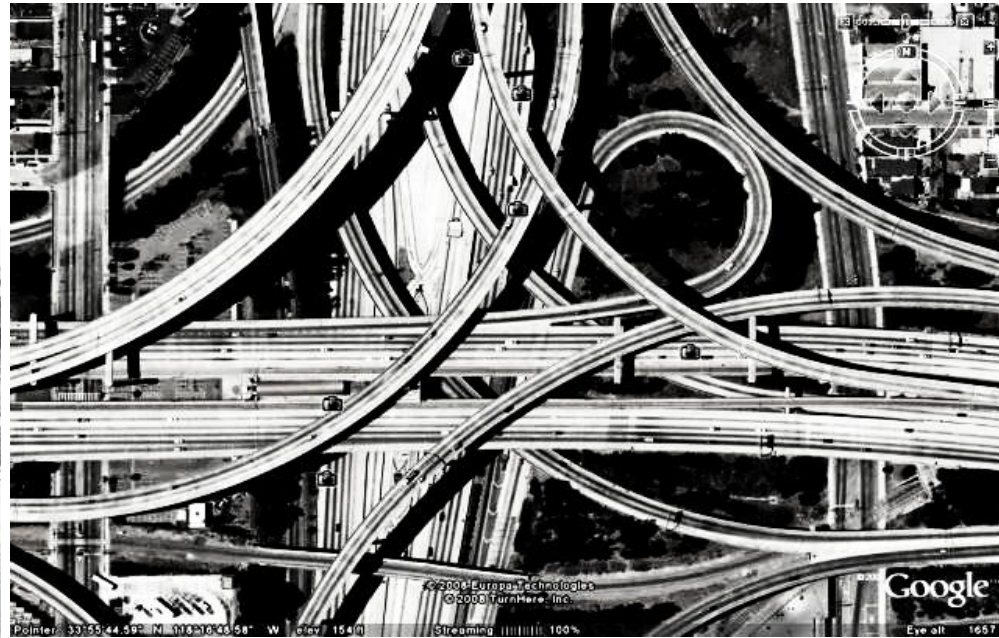






*Facile  
esecuzione  
delle tracce e  
dei cavedii*







- semplificazione
- garanzia dei risultati
- per tutte le maestranze

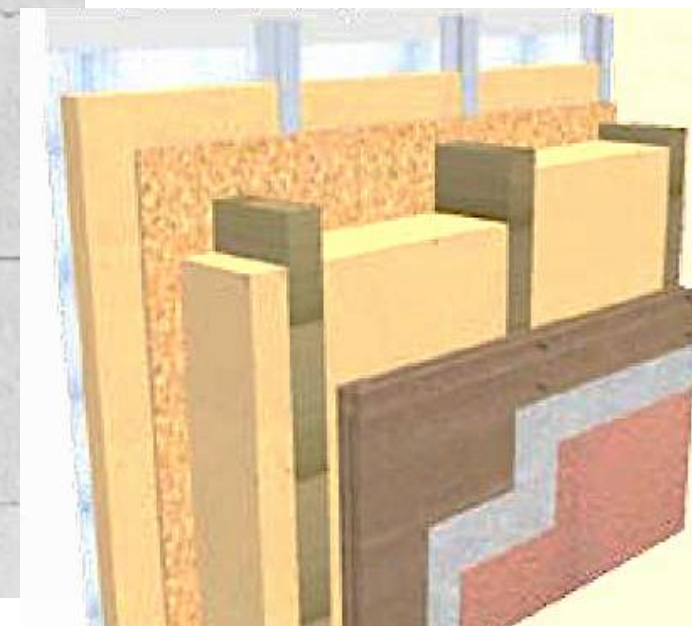
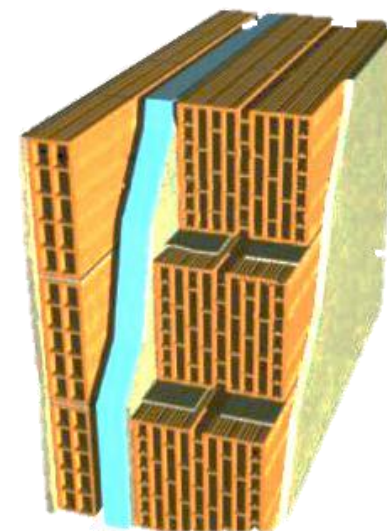


Figura 5 – Tamponamento con muratura in AAC sp. 30 cm non armata

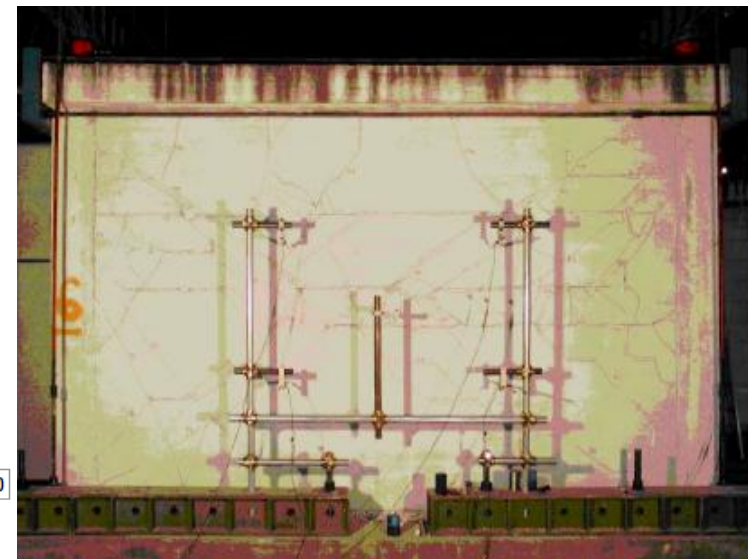
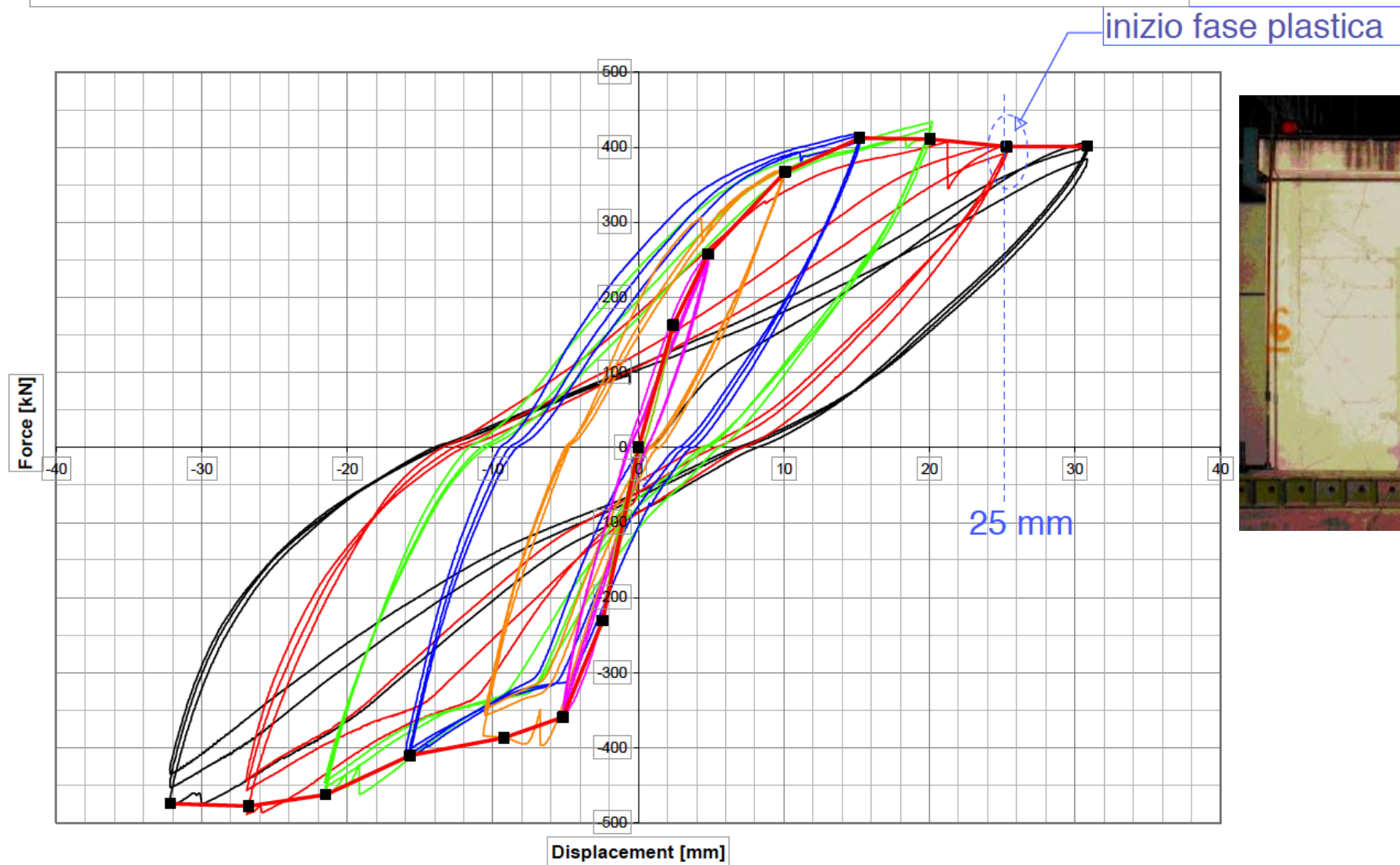




Figura 7 – Tamponamento con armatura ( $2\Phi 6/50$  cm) nelle scanalature dei blocchi

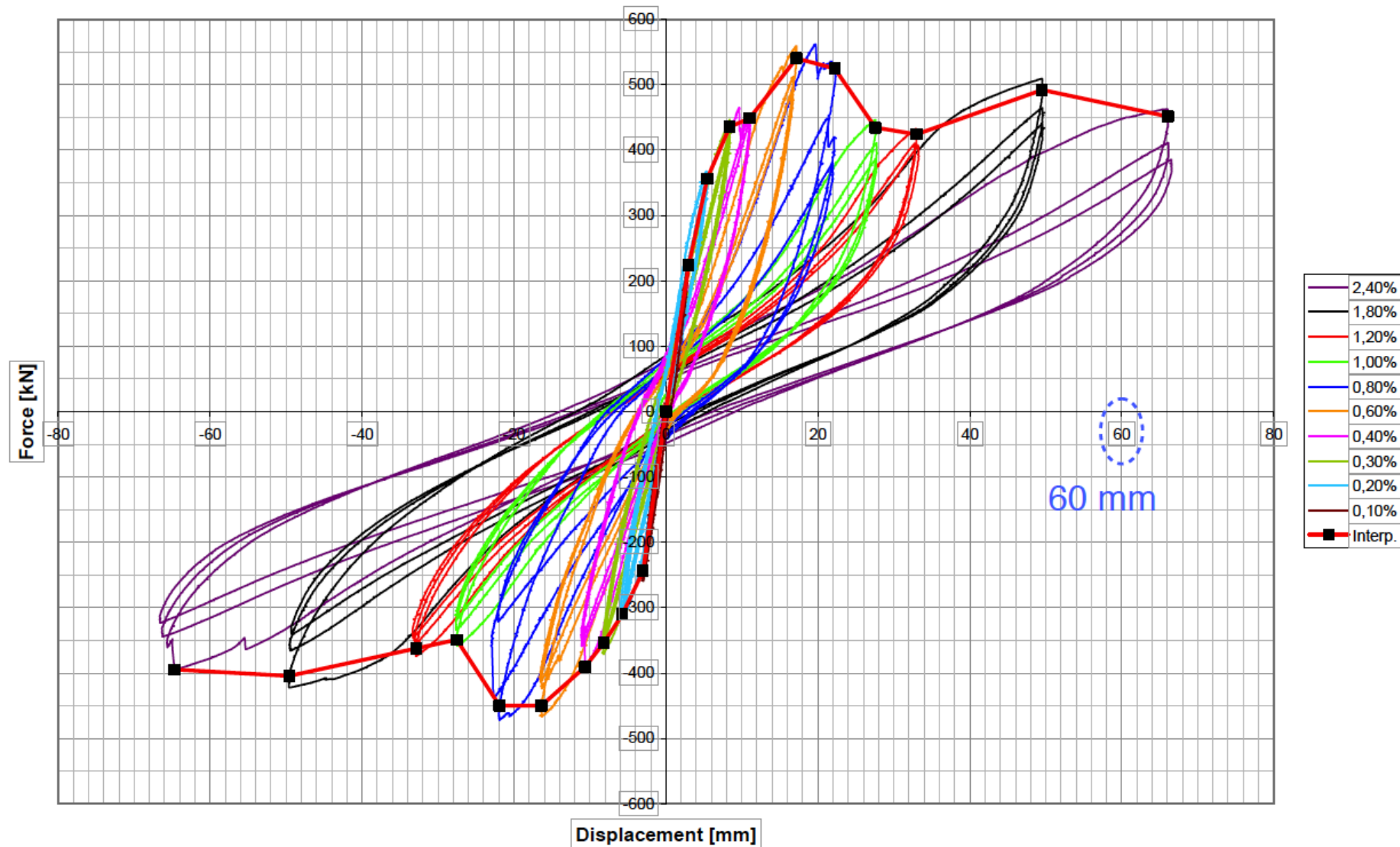
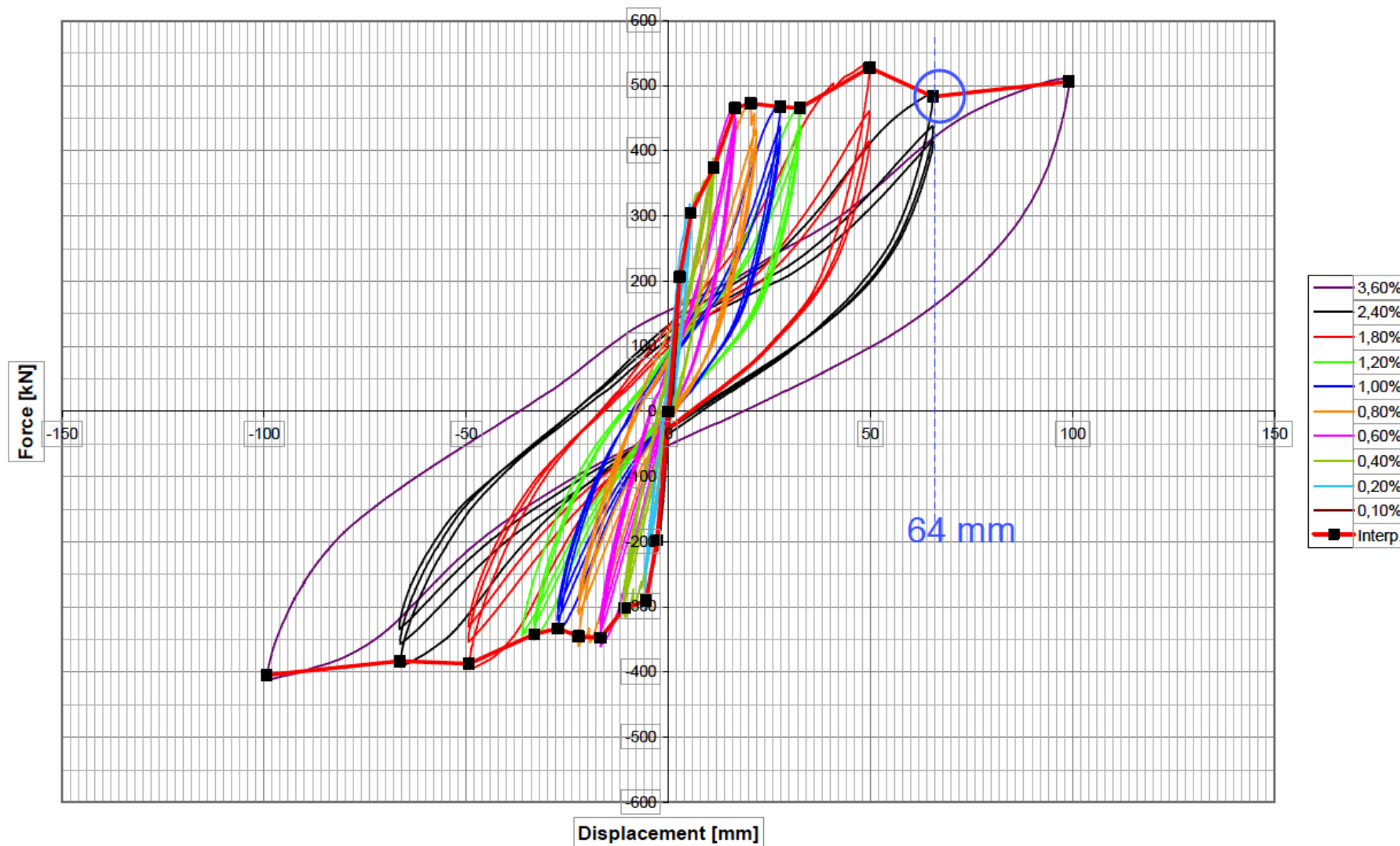
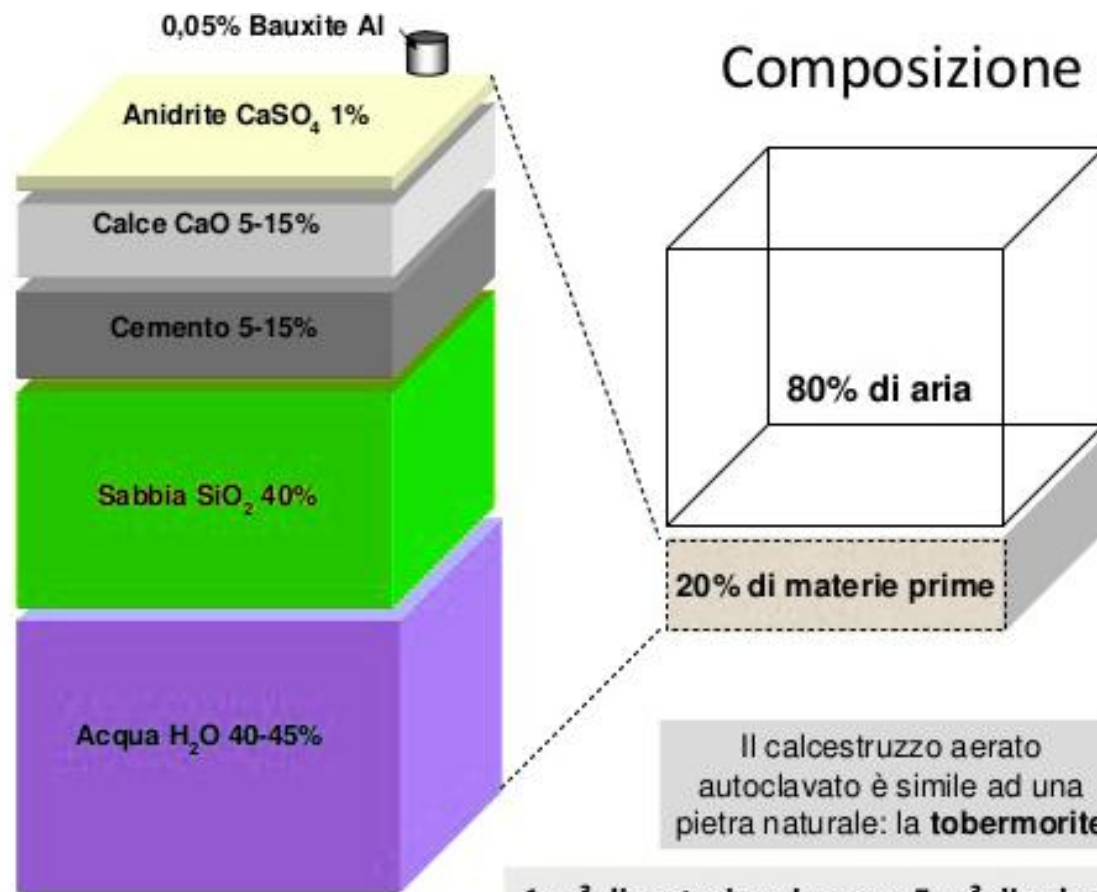


Figura 8 – Tamponamento con armatura (tralicci piatti) nei letti di malta (ogni 50 cm)





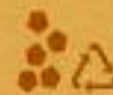


#### Cartografia





calcio, silicio e acqua  
per soli 220 °C

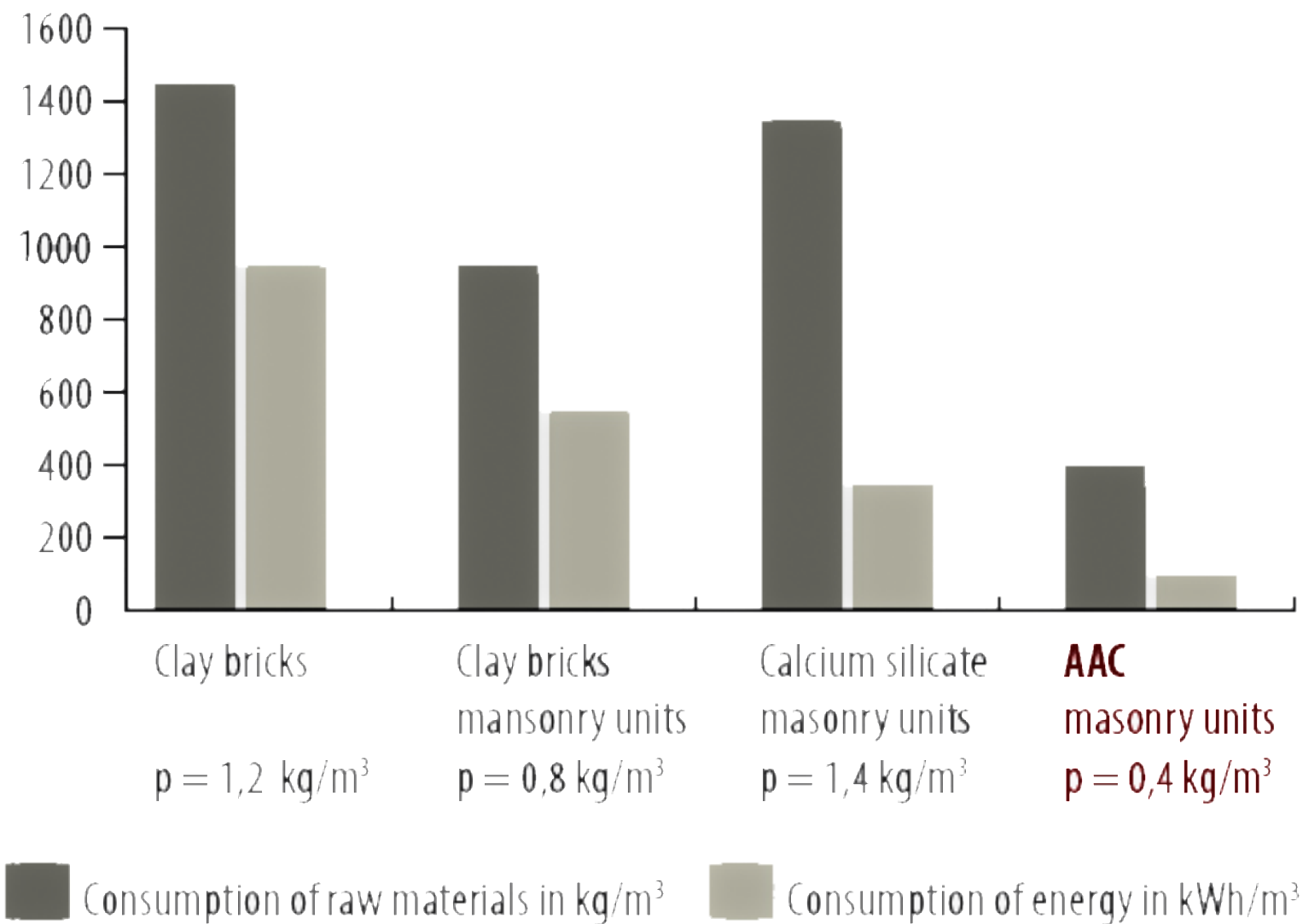


**mattONE**





### Consumption of raw materials and energy needed for production\*



Clay bricks

$\rho = 1,2 \text{ kg/m}^3$

Clay bricks  
masonry units

$\rho = 0,8 \text{ kg/m}^3$

Calcium silicate  
masonry units

$\rho = 1,4 \text{ kg/m}^3$

**AAC**  
masonry units

$\rho = 0,4 \text{ kg/m}^3$

*...Il motore del 2000 sarà bello e lucente  
Sarà veloce e silenzioso, sarà un motore delicato  
Avrà lo scarico calibrato e un odore che non inquina...  
Lo potrà respirare un bambino o una bambina...*









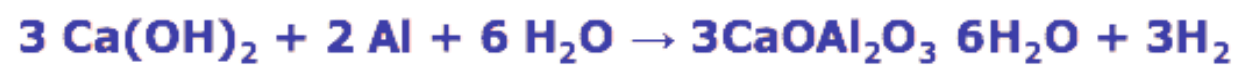
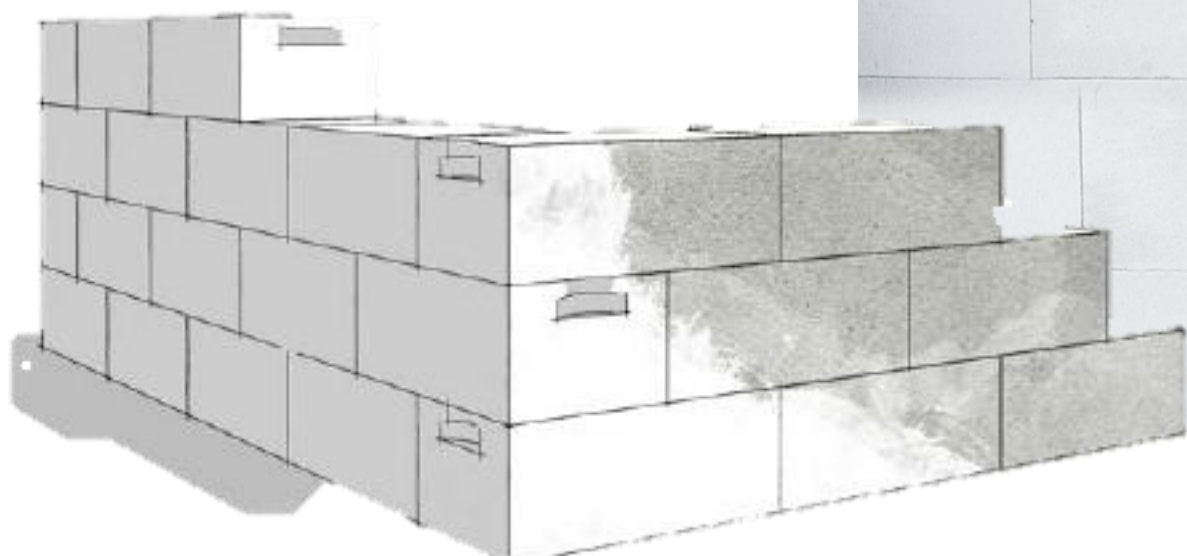












tour.edilportale.com



# edilportale<sup>®</sup>

## TOUR 2018

grazie per l'attenzione

tour.edilportale.com

